

AIM TO THRIVE WITH INDIA. RISE WITH INDIA.

Invest in Canara Robeco Manufacturing Fund
and seek to move forward as India moves ahead.



NFO Opens : 16th February 2024 | NFO Closes : 1st March 2024

CANARA ROBECO MANUFACTURING FUND

(Thematic - Manufacturing - An open-ended equity scheme
following Manufacturing theme)

This product is suitable for investors who are seeking*

- Long term capital appreciation
- Investments in equity and equity related instruments of Companies engaged in the Manufacturing theme

*Investors should consult their financial advisers if in doubt about whether the product is suitable for them. Product labelling assigned during the NFO is based on internal assessment of the scheme characteristics or model portfolio and the same may vary post NFO when the actual investments are made.



Mutual Fund investments are subject to market risks, read all scheme related documents carefully.

WHY WE BELIEVE INDIA CAN BECOME THE NEXT MANUFACTURING HUB



THRIVING DOMESTIC DEMAND

- Per Capita Income at an Inflection Point
- Rising Middle Class Population

FAVOURABLE POLICY REFORMS

- Initiatives to incentivise domestic manufacturing
- Labour Reforms and Ease of doing Business



ROBUST PRIVATE SECTOR

- Deleveraged Corporate Sector
- Globally Competitive Corporate Tax Structure

ALTERNATIVE SUPPLY CHAIN

- Globally competitive Businesses
- Repositioning of Global Supply Chains



INDIA WELL POSITIONED TO BECOME AN ATTRACTIVE INVESTMENT DESTINATION

CANARA ROBECO MANUFACTURING FUND – FUND PHILOSOPHY & SECTORAL BENEFICIARIES

MACRO TAILWINDS

Investment Beneficiaries

- Private Capex
- Government Capex
- Capacity Utilization

Sectorial Beneficiaries

- Capital Goods
- Cement
- Industrial
- Power

POLICY REFORMS

Export Promotion / Import Substitution

- PLI
- Make in India
- Atmanirbhar Bharat
- Single Window Clearance
- Import duties

Sectorial Beneficiaries

- EMS
- Renewables
- Defence
- Pharma

DEMOGRAPHIC ADVANTAGE

Consumption Beneficiaries

- Rising Middle-Class
- Higher Working Age Population

Sectorial Beneficiaries

- Automobiles
- Electronics
- Consumer Durables

SUPPLY CHAIN DIVERSIFICATION

Global Supply Chain Rejig

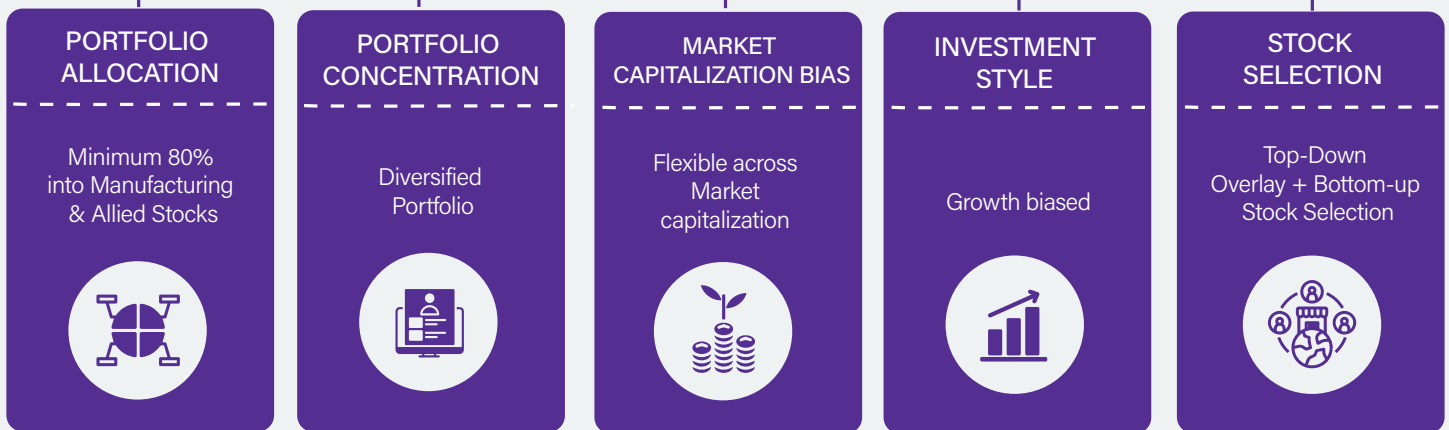
- Reduced Dependence on Single Source
- Geographical & Political Risk

Sectorial Beneficiaries

- Building Materials
- Auto Ancillaries
- Textile
- Specialty Chemicals

Note: The above is only for illustration purposes, purely to explain fund philosophy and the sector(s)/stock(s)/issuer(s) mentioned in this presentation do not constitute any research report/recommendation of the same and the fund may or may not have any future position in these sector(s)/stock(s)/issuer(s). Investors shall note that there is no assurance or guarantee that the investment objective of the scheme will be achieved.

CANARA ROBECO MANUFACTURING FUND - FUND STRATEGY



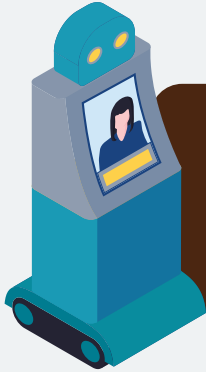
Note: The fund strategy is based upon our current fund management/ investment strategy. However, the same shall be subject to change depending on the market conditions. Investors are requested to refer SID for more information on Asset Allocation & Fund Strategy. Stock Universe is as on December 31, 2023.

WHY INVEST IN CANARA ROBECO MANUFACTURING FUND?

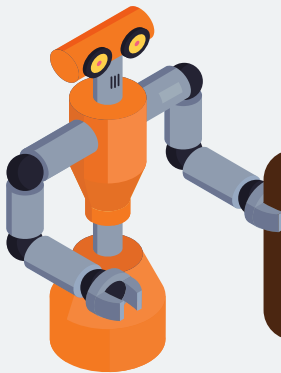
- Seek to become a **part of the India Growth Story** by investing into Canara Robeco Manufacturing Fund.
- The Fund aims to invest in companies which are beneficiaries of **Thriving Domestic Demand, Favourable Policy Reforms, Robust Private Sector, and Alternative Supply Chain.**
- The Fund aims to **capitalize on manufacturing trends and opportunities** investing across relevant sectors representing the Manufacturing theme.
- **Government thrust** on "Atmanirbhar Bharat", "Make in India" and through other reforms and incentives has **improved growth potential** of many manufacturing-oriented sectors and companies.

NOTE: THERE IS NO ASSURANCE OR GUARANTEE THAT THE INVESTMENT OBJECTIVE OF THE SCHEME WILL BE ACHIEVED.

WHO SHOULD INVEST IN THIS FUND?



Investors that are **comfortable with volatility** & expecting a better risk return tradeoff



Seasoned investors who are looking to invest in a **Manufacturing theme-based fund**

Investors with a **high-risk appetite** and **long-term investment horizon of 5 years and above** having a lower near-term liquidity needs



Note: There is no assurance or guarantee that the investment objective of the scheme will be achieved. Mutual fund investments are subject to market risks, please read scheme related documents carefully before investing.

SPECIAL FEATURES AVAILABLE DURING NFO

AUTO SWITCH FACILITY

Starting today, apply into any of the specified Debt funds

Purchase application is time-stamped for date of submission

Allotment of units in the approved Debt fund as per realization

Your Investment in the debt fund of your choice, continues to earn.

1st March 2024
NFO Closure date

The amount* you want will be switched out on 1st March 2024 to NFO scheme

You get to relax, avoid last day rush to apply for the NFO

Your investment is ready to kick start from the first day of allotment in NFO scheme.

SMART STP

AN OPTION TO INVEST IN A STAGGERED MANNER

INVESTOR CAN DO INVESTMENT IN THE NFO THROUGH 4 EQUAL INSTALLMENTS*

1st Installment

2nd Installment

3rd Installment

4th Installment

*Subject to Applicable Statutory Levies, Taxes and Exit Load.

INSTALLMENTS WILL BE FROM THE FOLLOWING SCHEME

Canara Robeco
Overnight Fund*

Canara Robeco
Liquid Fund

Canara Robeco
Ultra Short -Term Fund

Canara Robeco
Savings Fund

* Default scheme option if nothing is selected

OPTIONS AVAILABLE FOR INVESTMENT

OPTION 1 - MONTHLY SMART STP

1st Installment

The first installment would be of 25% of total amount invested during the NFO

2nd Installment

3rd Installment

4th Installment

Three remaining equal instalments would be triggered on specified date i.e. 5th, 10th, 15th, 20th day of each month after the NFO period, when the scheme re-opens for subscription

OPTION 2 - TRIGGER SMART STP

Trigger based on 1% fall in S&P BSE India Manufacturing TRI movement from 1st to 24th of each month after the NFO Period when the scheme re-opens for subscription.

In case the Trigger doesn't activate
Installment will be on 25th day of the month.

In case 25th is a non -business day,
Trigger will happen on next business day.

IF INVESTOR DO NOT SELECT ANY SMART STP OPTION, DEFAULT OPTION WOULD BE MONTHLY SMART STP

FUND FEATURES

NAME OF THE SCHEME	CANARA ROBECO MANUFACTURING FUND			
TYPE	Thematic - Manufacturing - An open-ended equity scheme following Manufacturing theme			
INVESTMENT OBJECTIVE	The scheme aims to generate long-term capital appreciation by investing predominantly in equities and equity related instruments of companies engaged in the Manufacturing theme. However, there can be no assurance that the investment objective of the scheme will be realized.			
ASSET ALLOCATION		INDICATIVE ALLOCATIONS (% OF TOTAL ASSETS)		RISK PROFILE
		MINIMUM	MAXIMUM	
	Equity and Equity-related Instruments of companies engaged in Manufacturing theme	80%	100%	VERY HIGH
	Equity and Equity-related Instruments of companies other than engaged in Manufacturing theme	0%	20%	VERY HIGH
	Debt and Money Market Instruments	0%	20%	LOW TO MODERATE
	Units issued by REITs and InvITs	0%	10%	VERY HIGH
PLANS & OPTIONS	Regular Plan & Direct Plan a. Growth b. Income Distribution cum Capital Withdrawal option: - Payout of Income Distribution cum Capital Withdrawal option - Reinvestment of Income Distribution cum Capital Withdrawal option			
FUND MANAGER	Pranav Gokhale & Shridatta Bhandwaladar			
LOAD STRUCTURE	Entry Load: Nil Exit Load: 1% - if redeemed/switched out within 365 days from the date of allotment. Nil - if redeemed/switched out after 365 days from the date of allotment			
BENCHMARK (FIRST TIER)	S&P BSE India Manufacturing TRI			

NOTE: UNDER NORMAL CIRCUMSTANCES, THE ASSET ALLOCATION OF THE SCHEME WILL BE AS PER ABOVE TABLE. INVESTORS ARE REQUESTED TO REFER SID FOR MORE INFORMATION ON ASSET ALLOCATION.

NAME OF SCHEME	RISKOMETER	Potential Risk Class (PRC) Matrix																								
<p>Canara Robeco Overnight Fund Overnight Fund - An open-ended debt scheme investing in overnight securities. A relatively low interest rate risk and relatively low credit risk.</p> <p>THIS PRODUCT IS SUITABLE FOR INVESTORS WHO ARE</p> <ul style="list-style-type: none"> Regular income over short term that may be in line with the overnight call rates Investment in overnight securities 	<p>SCHEME RISKOMETER Investors understand that their principal will be at Low Risk</p> <p>BENCHMARK RISKOMETER Benchmark Riskometer is at Low Risk Benchmark Riskometer (CRSIL Liquid Overnight Index)</p>	<p>Relatively Low Interest Rate Risk and Relatively Low Credit Risk</p> <table border="1"> <thead> <tr> <th colspan="4">Potential Risk Class</th> </tr> <tr> <th>Credit Risk</th> <th>Relatively Low (Class A)</th> <th>Moderate (Class B)</th> <th>Relatively High (Class C)</th> </tr> </thead> <tbody> <tr> <th>Interest Rate Risk</th> <td></td> <td></td> <td></td> </tr> <tr> <th>Relatively Low (Class I)</th> <td>A-I</td> <td></td> <td></td> </tr> <tr> <th>Moderate (Class II)</th> <td></td> <td></td> <td></td> </tr> <tr> <th>Relatively High (Class III)</th> <td></td> <td></td> <td></td> </tr> </tbody> </table>	Potential Risk Class				Credit Risk	Relatively Low (Class A)	Moderate (Class B)	Relatively High (Class C)	Interest Rate Risk				Relatively Low (Class I)	A-I			Moderate (Class II)				Relatively High (Class III)			
Potential Risk Class																										
Credit Risk	Relatively Low (Class A)	Moderate (Class B)	Relatively High (Class C)																							
Interest Rate Risk																										
Relatively Low (Class I)	A-I																									
Moderate (Class II)																										
Relatively High (Class III)																										

NAME OF SCHEME	RISKOMETER	Potential Risk Class (PRC) Matrix																								
<p>Canara Robeco Liquid Fund Liquid Fund - An open ended liquid scheme. A relatively low interest rate risk and relatively low credit risk.</p> <p>THIS PRODUCT IS SUITABLE FOR INVESTORS WHO ARE</p> <ul style="list-style-type: none"> Income/Capital appreciation while maintaining a level of high liquidity Investment in a mix of Debt and Money Market instruments with maturity of upto 91 days only 	<p>SCHEME RISKOMETER Investors understand that their principal will be at Low to Moderate Risk</p> <p>BENCHMARK RISKOMETER Benchmark Riskometer is at Low to Moderate Risk Benchmark Riskometer (CRSIL Liquid Debt A-Index)</p>	<p>Relatively Low Interest Rate Risk and Relatively Low Credit Risk</p> <table border="1"> <thead> <tr> <th colspan="4">Potential Risk Class</th> </tr> <tr> <th>Credit Risk</th> <th>Relatively Low (Class A)</th> <th>Moderate (Class B)</th> <th>Relatively High (Class C)</th> </tr> </thead> <tbody> <tr> <th>Interest Rate Risk</th> <td></td> <td></td> <td></td> </tr> <tr> <th>Relatively Low (Class I)</th> <td>A-I</td> <td></td> <td></td> </tr> <tr> <th>Moderate (Class II)</th> <td></td> <td></td> <td></td> </tr> <tr> <th>Relatively High (Class III)</th> <td></td> <td></td> <td></td> </tr> </tbody> </table>	Potential Risk Class				Credit Risk	Relatively Low (Class A)	Moderate (Class B)	Relatively High (Class C)	Interest Rate Risk				Relatively Low (Class I)	A-I			Moderate (Class II)				Relatively High (Class III)			
Potential Risk Class																										
Credit Risk	Relatively Low (Class A)	Moderate (Class B)	Relatively High (Class C)																							
Interest Rate Risk																										
Relatively Low (Class I)	A-I																									
Moderate (Class II)																										
Relatively High (Class III)																										

NAME OF SCHEME	RISKOMETER	Potential Risk Class (PRC) Matrix																								
<p>Canara Robeco Ultra Short Term Fund Ultra Short Duration Fund - An open ended ultra-short term debt scheme investing in debt & money market instruments such that the Macaulay duration of the portfolio is between 3 months and 6 months. A relatively low interest rate risk and moderate credit risk.</p> <p>THIS PRODUCT IS SUITABLE FOR INVESTORS WHO ARE</p> <ul style="list-style-type: none"> Income/Capital appreciation over ultra short term through a low risk strategy Investment in a mix of Debt and Money Market instruments such that the Macaulay duration of the portfolio is between 3 months and 6 months 	<p>SCHEME RISKOMETER Investors understand that their principal will be at Low to Moderate Risk</p> <p>BENCHMARK RISKOMETER Benchmark Riskometer is at Moderate High Risk Benchmark Riskometer (CRSIL Ultra Short Duration Debt B-Index)</p>	<p>Relatively Low Interest Rate Risk and Moderate Credit Risk</p> <table border="1"> <thead> <tr> <th colspan="4">Potential Risk Class</th> </tr> <tr> <th>Credit Risk</th> <th>Relatively Low (Class A)</th> <th>Moderate (Class B)</th> <th>Relatively High (Class C)</th> </tr> </thead> <tbody> <tr> <th>Interest Rate Risk</th> <td></td> <td></td> <td></td> </tr> <tr> <th>Relatively Low (Class I)</th> <td></td> <td>B-I</td> <td></td> </tr> <tr> <th>Moderate (Class II)</th> <td></td> <td></td> <td></td> </tr> <tr> <th>Relatively High (Class III)</th> <td></td> <td></td> <td></td> </tr> </tbody> </table>	Potential Risk Class				Credit Risk	Relatively Low (Class A)	Moderate (Class B)	Relatively High (Class C)	Interest Rate Risk				Relatively Low (Class I)		B-I		Moderate (Class II)				Relatively High (Class III)			
Potential Risk Class																										
Credit Risk	Relatively Low (Class A)	Moderate (Class B)	Relatively High (Class C)																							
Interest Rate Risk																										
Relatively Low (Class I)		B-I																								
Moderate (Class II)																										
Relatively High (Class III)																										

NAME OF SCHEME	RISKOMETER	Potential Risk Class (PRC) Matrix																								
<p>Canara Robeco Savings Fund Low Duration Fund - An open-ended low duration debt scheme investing in debt & money market instruments such that the Macaulay duration of the portfolio is between 6 months and 12 months. A relatively low interest rate risk and moderate credit risk.</p> <p>THIS PRODUCT IS SUITABLE FOR INVESTORS WHO ARE</p> <ul style="list-style-type: none"> Income/Capital appreciation through a low duration strategy Investment in debt & money market instruments such that the Macaulay duration of the portfolio is between 6 months and 12 months 	<p>SCHEME RISKOMETER Investors understand that their principal will be at Low to Moderate Risk</p> <p>BENCHMARK RISKOMETER Benchmark Riskometer is at Moderate Risk Benchmark Riskometer (CRSIL Low Duration Debt B-Index)</p>	<p>Relatively Low Interest Rate Risk and Moderate Credit Risk</p> <table border="1"> <thead> <tr> <th colspan="4">Potential Risk Class</th> </tr> <tr> <th>Credit Risk</th> <th>Relatively Low (Class A)</th> <th>Moderate (Class B)</th> <th>Relatively High (Class C)</th> </tr> </thead> <tbody> <tr> <th>Interest Rate Risk</th> <td></td> <td></td> <td></td> </tr> <tr> <th>Relatively Low (Class I)</th> <td></td> <td>B-I</td> <td></td> </tr> <tr> <th>Moderate (Class II)</th> <td></td> <td></td> <td></td> </tr> <tr> <th>Relatively High (Class III)</th> <td></td> <td></td> <td></td> </tr> </tbody> </table>	Potential Risk Class				Credit Risk	Relatively Low (Class A)	Moderate (Class B)	Relatively High (Class C)	Interest Rate Risk				Relatively Low (Class I)		B-I		Moderate (Class II)				Relatively High (Class III)			
Potential Risk Class																										
Credit Risk	Relatively Low (Class A)	Moderate (Class B)	Relatively High (Class C)																							
Interest Rate Risk																										
Relatively Low (Class I)		B-I																								
Moderate (Class II)																										
Relatively High (Class III)																										

DISCLAIMER

The information used towards formulating this document have been obtained from sources published by third parties. While such publications are believed to be reliable, the opinions expressed in this document are of personal nature and does not constitute the views of Canara Robeco Asset Management. The above content is for information purpose only and do not constitute any guidelines or recommendation on any course of action to be followed by the reader. Recipients of this communication should rely on information/data arising out of their own investigations. Readers are advised to seek independent professional advice, verify the contents and arrive at an informed investment decision before making any investments. Investor shall note that there is no assurance or guarantee that the investment objective of the scheme will be achieved. Statements/ opinions/recommendations in this communication which contain words or phrases such as "will", "expect", "could", "believe" and similar expressions or variations of such expressions are "forward - looking statements". Actual results may differ materially from those suggested by the forward-looking statements due to market risk or uncertainties. The sector(s)/stock(s)/issuer(s) mentioned in this presentation do not constitute any research report/recommendation of the same and the fund may or may not have any future position in these sector(s)/stock(s)/issuer(s). It is hereby expressly stated that, neither the AMC, its officers, the trustees, the Fund or any of their affiliates or representatives assume any responsibility for the accuracy of such information or the views thereof. Further, CRMF, its Sponsors, its Trustees, CRAMC, its employees, officer, Directors, etc. assume no financial liability whatsoever to the user of this document. This document is for general information purposes only and should not construed as solicitation to invest in the Mutual Fund schemes.

MUTUAL FUND INVESTMENTS ARE SUBJECT TO MARKET RISKS, READ ALL SCHEME RELATED DOCUMENTS CAREFULLY.